

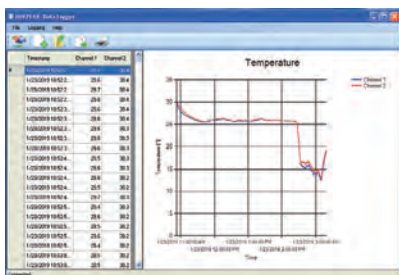
HI148 Series

Waterproof Thermologgers

- IP67 waterproof casing
- Wall cradle included for versatile installation and easy thermologger removal
- One or two channels, with internal and/or external sensor
- 16,000 samples (for 1-channel models) or 8000 samples/channels (for 2-channels models)
- Programmable high and low alarms
- Programmable logging interval from 1 second to 24 hours for 1-channel models, from 2 seconds to 24 hours for 2-channel models
- Storing of temperature at logging interval, or min or max temperature between logging intervals
- Logging delay start from 1 second to 199 hours using the HI92148 PC application or the Log start button
- Non-volatile storage of logging parameters and data in EEPROM
- BEPS (Battery Error Prevention System)
- Security password and lot serial number
- USB Type-C connector
- All HI148 thermologgers are factory calibrated.

The HI148 series of thermologgers are ideal for monitoring temperature in applications such as food processing, transportation, museums, and horticulture.

The thermologgers feature extensive memory capacity: 16,000 samples for 1-channel models and 8000 samples/channel for 2-channel models.



The HI92148 application software (required) supports communication between the logger and a PC running Windows® OS through a USB-C cable. Using the application, data acquisition parameters are user selectable and logged data can be downloaded and stored via USB cable.



USB connection



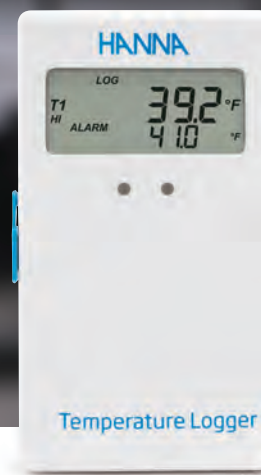
HI148-1
1 internal sensor
(shown with included wall cradle)



HI148-2
1 external sensor



HI148-3
1 internal and 1 external sensor



HI148-4
2 external sensors

Specifications

HI148 Series

Model	Sensors	
HI148-1	T1 internal	-20.0 to 60.0°C / -4.0 to 140.0°F
HI148-2	T1 external	-40.0 to 125.0°C / -40.0 to 257.0°F
HI148-3	T1 internal T2 external	-20.0 to 60.0°C / -4.0 to 140.0°F -40.0 to 125.0°C / -40.0 to 257.0°F
HI148-4	T1 external T2 external	-40.0 to 125.0°C / -40.0 to 257.0°F -40.0 to 125.0°C / -40.0 to 257.0°F
Resolution		0.1°C (-40.0 to 100.0°C); 0.2°C (temp. >100.0°C); 0.1°F (-40.0 to 190.0°F); 0.3°F (temp. >190.0°F)
Accuracy		±0.5°C (-40.0 to 0.0 and 70.0 to 100.0°C); ±0.4°C (0.0 to 70.0°C); ±1.0°C (>100.0°C) ±1.0°F (-40.0 to 32.0 and 158.0 to 212.0°F); ±0.8°F (32.0 to 158.0°F); ±2.0°F (>212.0°F)
Additional Specifications	Probe	stainless steel probe with 1 m (3.3') silicone cable; 33.5 mm (1.32") length, 3.5 mm (0.14") diameter
	Battery Type / Life	1.5V AAA (3) / approximately 2 years of use
	Environment	-20.0 to 60.0°C (-4.0 to 140.0°F); RH 100%
	Dimensions	107 x 59 x 17 mm (4.2 x 2.3 x 0.7")
	Weight	130 g (4.6 oz)

Ordering Information

HI148-1 (1 internal sensor) is supplied with wall cradle, software, USB type A to C cable, batteries, and instruction manual.
HI148-2 (1 external sensor) is supplied with wall cradle, software, USB type A to C cable, batteries, and instruction manual.
HI148-3 (1 internal, 1 external sensors) is supplied with wall cradle, software, USB type A to C cable, batteries, and instruction manual.
HI148-4 (2 external sensors) is supplied with wall cradle, software, USB type A to C cable, batteries, and instruction manual.