

Temperature Dataloggers

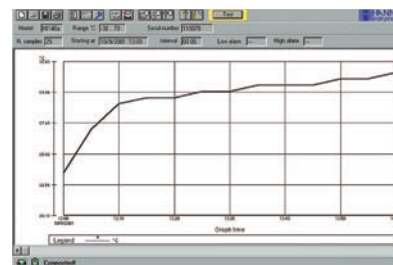
The HI140 dataloggers represent the most economical and secure way of monitoring temperature continuously over long periods of time. These models are housed in a rugged, waterproof ABS casing that seals against the ingress of dust and water. HI140 dataloggers feature different temperature ranges to make them more accurate for your specific needs. They can be placed with goods on the move, on supermarket shelves and in warehouses. These dataloggers can provide that extra guarantee that goods never ventured out of limits of public safety.

All parameters can be set through our Windows® compatible software via RS232 communication and an infrared transmitter (software and transmitter not included).

- **Waterproof**
 - The case of the HI140 dataloggers is waterproof rated IP67.
- **°C/°F Ranges**
 - Through the application software, all HI140 models can be programmed to read in Celsius or Fahrenheit.
- **Data Logging**
 - The HI140 can store up to 7600 measurements at selectable intervals from 1 minute to 24 hours. Users can also program a delayed logging start time from 0 minutes to 24 hours.
- **Programmable Alarms**
 - High and low alarm thresholds can be programmed to alert users if the temperature readings go outside of the acceptable range. The PC software can also indicate the length of time that temperatures remained unacceptable.
- **Status Indicator Lights**
 - The two external LEDs are used for communication with the infrared transmitter. A green LED on the front of the meter notifies users of the logging status, while a red LED serves as an alarm indication when undesired temperatures have been encountered.
- **Enhanced Battery Life**
 - The HI140 series uses AA batteries to achieve a battery life of about 4 years at 25°C.
- **Battery Error Prevention System (BEPS)**
 - BEPS shuts the meter off when the battery power is too low for an accurate measurement.



- **PC Connectivity**
 - Logged data can be transferred to a PC by simply placing the instrument on the HI90140 infrared cradle (not included). Using the cradle and software, users need just one PC interface to handle all HI140 dataloggers, each identified by a unique ID code.



Specifications	Model	Range	Resolution	Accuracy
Models Specific	HI140AH	-30.0 to 70.0°C / -22 to 158°F	0.5°C / 0.5°F	±1.5°C / ±3°F
	HI140BH	-10.0 to 30.0°C / 14 to 86°F	0.2°C / 0.4°F	±0.5°C / ±1°F
	HI140CH	-30.0 to 10.0°C / -22 to 50°F	0.2°C / 0.4°F	±0.5°C / ±1°F
	HI140DH	20.0 to 60.0°C / 68 to 140°F	0.2°C / 0.4°F	±0.5°C / ±1°F
	HI140GH	-5.0 to 15.0°C / 23 to 59°F	0.1°C / 0.2°F	±0.3°C / ±0.6°F
	HI140HH	10 to 120°C / 50 to 248°F	1°C / 2°F	±2°C / ±4°F
All Models	Battery Type / Life	3 x 1.5V AA batteries / approx. life of 4 years at 25°C		
	Environment	RH 100%		
	Diameter	86.5 mm (3.4")		
	Height	35 mm (1.4")		
	Weight	150 g (5.5 oz.)		
Ordering Information	All HI140 models are supplied with batteries and instructions.			
Accessories	HI92140	Windows® compatible software		
	HI90140	infrared transmitter		

All loggers have the following features: programmable high and low alarm thresholds; programmable logging interval from 1 min. to 23 hours and 59 min; logging delay start selectable from 0 min. to 23 hours and 59 min; programmable ID number; infrared communication with PC interface; programmable real time clock; 3 x 1.5V AA batteries (included) with approx. life of 4 years at 25°C; dimensions: dia 86.5 mm x h 35 mm; / weight: 150 g